

Radprofile

CNC PROGRAMMING FOR LASER, PLASMA, FLAME CUTTING AND WATERJET MACHINES

Radprofile brings advanced CNC profiling to the **Radan 03** family. Combining sophisticated technology with a high level of automation, Radprofile delivers maximum productivity for your engineering staff and machine tools.

Radan 03 Radprofile supports most machine tools available worldwide today. Indeed Radan's long history means that there are few machines for which we have not provided solutions.

Radprofile integrates seamlessly with Radpunch to provide a comprehensive solution for combination machines such as punch/laser or punch/plasma.

In **Radan 03**, Radprofile is even easier to use than ever. The revised user interface and graphics display simplifies operation and enhancements to the manufacturing database means that more information about your production processes is captured by the system for use in future programs.

Radprofile benefits:

- Maximise material utilisation with single part layout and automatic nesting.
- High productivity for engineers and machine tools
- Reduced lead times.
- Increased production flexibility.
- Material savings.
- Only one software package needed to drive all your machine tools.
- Support for your machine's advanced features.
- Efficient data exchange for sub-contractors.
- An integrated component of **Radan 03**.

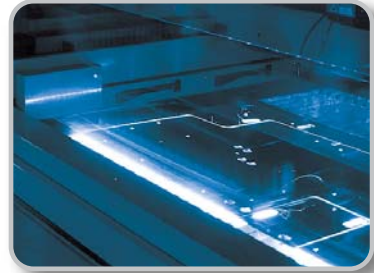
The most powerful sheet metal software in the world

 **RADAN** 

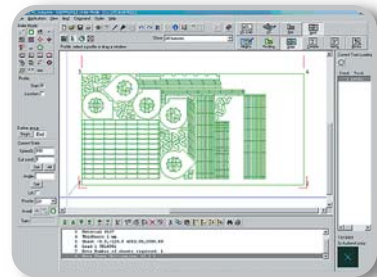
Radprofile

Features:

- Easy to use Windows interface with drag and drop data exchange from DXF, DWG or IGES files.
- Import/Export wizards for batch processing of DXF, DWG or IGES files.
- Fully automatic profile setup.
- Automated common line cutting.
- Flexible support for lead-in, lead-out, tagging and overburn.
- Smart lead-in placement for maximum safety.
- Material database including cutting parameters.
- Fully automatic multi-part nesting.
- Cutting sequence optimisation with hazard avoidance.

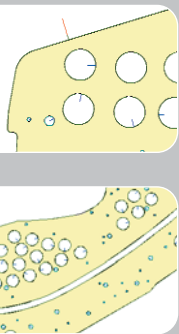


Maximise material utilisation



Automatic multipart nesting

Automated Operation



Radan 03 Radprofile is highly automated. As standard, it features a sophisticated nesting module that is central to the automation system. Capable of processing a schedule of parts of different materials, and generating a complete sequence of nests, Radprofile will revolutionise your production.

The standard nesting in Radprofile carries out nesting based on rectangular shapes and includes the ability to nest small parts automatically within large cutouts

in other parts. It is possible to extend this level of functionality with the addition of Radnest, which enables fully generalised, irregularly shaped, parts nesting.

The schedule of parts includes the part number, material, quantity required and production priority. Typically, schedules are managed on a daily or even weekly cycle. Once the parts are available to the Radprofile system and the schedule is set up, program generation is automatic.

Nesting packs parts efficiently onto available raw material and profile cutting is calculated according to your pre-configured strategy. Lead-ins and tags are automatically positioned and parts are separated from the sheet in an efficient sequence. Each nest is post processed in a matter of seconds and is then available for production. Radprofile delivers outstanding productivity, out of the box.

Radan provides unrivaled after-sales service, including:

- Direct PC-PC support.
- Training at customers site or Radan's offices.
- Consultancy & customisation.
- Affordable software maintenance.
- Competitive upgrade policy.

RADAN (UK)

Radan Computational Ltd, Head Office, Granville Road, Bath BA1 9BE
T +44 1225 320320, F +44 1225 320311, E sales@uk.radan.com

RADAN (USA)

Radan CIM Inc. 1100 Quail Street, Suite 204, Newport Beach, CA 92660, USA
T +1 800 875 7232, F +1 949 261 7704, E sales@radancim.com