

Radraft

COST EFFECTIVE DRAUGHTING FOR SHEET METAL ENGINEERING

Radraft provides **Radan 03** users with a comprehensive draughting solution for drawing preparation and all 2D geometry manipulation. With many advanced features and an easy-to-use graphical interface, Radraft is flexible and cost effective.

Radraft is a highly productive tool that will meet your engineering drawing needs. In addition, the full toolset of draughting functionality is available for all other 2D geometry tasks in **Radan 03**. Whether it is drawing a sheet metal profile in **Radan 03** 3D, or a sheet metal part in Radpunch or Radprofile, the full power of Radraft geometry construction tools is available.

The standard toolset made available in Radraft, reduces training requirements, eases deployment and delivers higher productivity.

Radraft benefits:

- Full functionality 2D draughting package.
- Easy to use.
- Fast geometry construction.
- Increased productivity.
- Efficient data exchange for DXF, DWG and IGES simplifies working with partners and customers.
- Easy data exchange with remote **Radan 03** systems.
- A single interface to all 2D geometry construction.
- Integrated manufacturing features such as pre-defined tooling and standard cutouts.
- Built-in specialist sheet metal features.
- An integrated component of **Radan 03**.

The most powerful sheet metal software in the world

 **RADAN** 

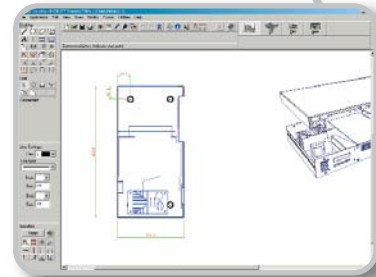
Radraft

Features:-

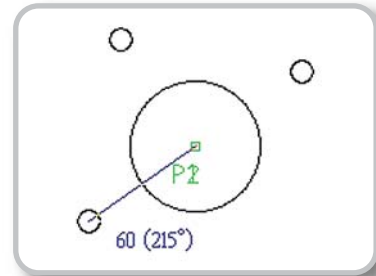
- Even easier geometry construction in **Radan 03**.
- New Snap function for accurately constructing geometry using only the cursor and no keyboard input.
- Easy positioning of a PCD of holes at odd angles without keyboard input.

Draughting for Sheet Metal:-

- Powerful and extensive functions improve productivity.
- Commands to make drawing common shapes easy.
- Radraft's flexible symbol feature allows shapes and patterns to be saved for future use.
- Unrivalled functionality enabling any TrueType fonts on your PC to be turned into cutting profiles.
- A sophisticated algorithm to smooth profiles to within a tolerance you specify, producing the least lines and arcs.
- Parametric dimensions allow for automatic updating when geometry values are changed.



Cost-effective draughting for sheet metal



New snap function

Radan 03 Integration

Radraft is completely integrated within **Radan 03**, and is available whenever 2D geometry manipulation is required.

Within Radpunch and Radprofile, Radraft provides the functionality for defining parts and standard hole patterns and shapes, as well as the ability to produce high quality engineering drawings.

In **Radan 03 3D**, the standard draughting tools are available to define geometry such as profiles, sheets and cutouts. Radraft drawing elevations are created automatically from **Radan 03** 3D models. These drawings can be further modified and annotated but remain associative with the model so that engineering

changes made are automatically reflected in both model and associated drawings.

This high level of integration can deliver exceptional productivity gains.

Radan provides unrivalled after-sales service, including:

- Direct PC-PC support.
- Training at customers site or Radan's offices.
- Consultancy & customisation.
- Affordable software maintenance.
- Competitive upgrade policy.

RADAN (UK)

Radan Computational Ltd, Head Office, Granville Road, Bath BA1 9BE
T +44 1225 320320, F +44 1225 320311, E sales@uk.radan.com

RADAN (USA)

Radan CIM Inc. 1100 Quail Street, Suite 204, Newport Beach, CA 92660, USA
T +1 800 875 7232, F +1 949 261 7704, E sales@radancim.com